

 **EKURE[®]**

SEKISUI
DIAGNOSTICS

Because every result matters™

Sekisui Diagnostics is a recognized leader in the development, manufacture, and supply of innovative clinical chemistry reagents and systems that enhance the clinical chemistry laboratory function. Over 1.7 billion tests are performed each year using our products.

With a broad line of >65 reagents including cardiovascular, diabetes, renal, liver, therapeutic drug, and specialty assays, we can meet your individual needs.

Our reagents feature liquid stable technology, exceptional performance, accommodating packaging, and field proven reliability, along with supporting products, and services.

In addition, our replacement chemistries are economical and a number of applications are available for many automated analyzers.

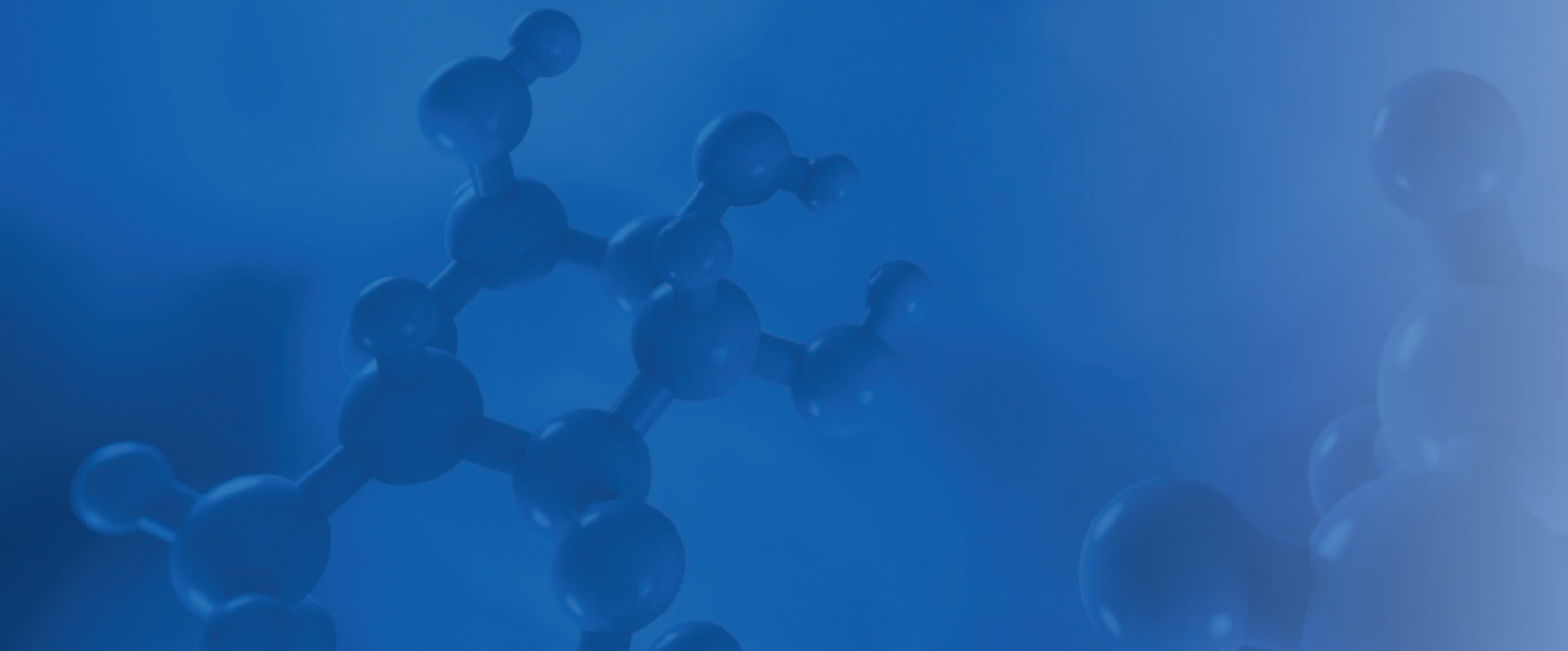
SEKURE®

SK500TM
CHEMISTRY

Chemistry
Care®

Experience + Technology + Portfolio + Support = $\frac{\text{CLINICAL}}{\text{CHEMABILITY}}^{\text{TM}}$

It's as unique as it sounds: Sekisui Diagnostics Clinical ChemAbility™ is the power to produce and provide a wide range of **quality, progressive products** that **enhance the clinical chemistry laboratory function**. Global manufacturing and distribution of reliable, **accurate diagnostic products**, along with **exceptional customer service**, is what makes Clinical ChemAbility™ one-of-a-kind.



SEKURE® CLINICAL CHEMISTRY REAGENTS

PART NO.	AVAILABILITY	PRODUCT	CONFIGURATION
506-30	◆◆◆◆	Acetaminophen L3K®	3 x 10 mL (R1) 6 x 10 mL (R2) 1 x 5 mL Calibrator
318-30	◆◆◆◆	Alanine Aminotransferase (ALT)- SL	3 x 100 mL (R1) 1 x 75 mL (R2)
200-45	◆◆◆◆	Albumin	4 x 125 mL
328-30	◆◆◆◆	Alkaline Phosphatase (ALP)-SL	3 x 100 mL (R1) 1 x 75 mL (R2)
293-10	◆◆◆◆	Ammonia L3K®	2 x 20 mL 1 x 15 mL Calibrator
80-5383-00	◆◆◆	Amylase Liquid Select	10 x 5 mL
319-30	◆◆◆◆	Aspartate Aminotransferase (AST)-SL	3 x 100 mL (R1) 1 x 75 mL (R2)
247-30	◆◆◆◆	Bilirubin, Direct-SL	3 x 100 mL (R1) 1 x 75 mL (R2)
284-10	◆◆◆	Bilirubin, Total-SL-X	1 x 100 mL (R1) 1 x 25 mL (R2)
284-30	◆◆◆	Bilirubin, Total-SL-X	3 x 100 mL (R1) 1 x 75 mL (R2)
140-20	◆◆◆◆	Calcium	4 x 125 mL 1 x 15 mL Manual Calibrator
299-17	◆◆◆◆	Carbon Dioxide (CO2) L3K®	5 x 100 mL
299-30	◆◆◆◆	Carbon Dioxide (CO2) L3K®	6 x 30 mL
299-50	◆◆◆◆	Carbon Dioxide (CO2) L3K®	4 x 500 mL
299-55	◆◆◆◆	Carbon Dioxide (CO2) L3K®	1 x 500 mL
288-36	◆◆◆◆	Carbon Dioxide (CO2) L3K® Concentrate	3 x 60 mL
234-60	◆◆◆◆	Cholesterol-SL	2 x 100 mL
082	◆	CRP Ultra WR	1 x 30 mL (R1) 1 x 20 mL (R2)
082B	◆	CRP Ultra WR Calibrator	5 x 2 mL
326-10	◆◆◆◆	Creatine Kinase (CK)-SL	1 x 100 mL (R1) 1 x 25 mL (R2)
265-30	◆◆◆◆*	Creatinine, Enzymatic	3 x 100 mL (R1) 1 x 100 mL (R2)
221-30	◆◆◆◆	Creatinine-S	2 x 250 mL (R1) 1 x 125 mL (R2) 1 x 15 mL Manual Calibrator
SE-035	◆◆◆◆	DC-Cal Multi-Analyte Calibrator	5 x 3 mL
SM-052	◆◆◆◆	DC-Trol Multi-Analyte Control Material Level 1	10 x 5 mL
SM-056	◆◆◆◆	DC-Trol Multi-Analyte Control Material Level 2	10 x 5 mL
273-30	◆◆◆◆	Ethanol L3K®	6 x 30 mL 1 x 5 mL Calibrator
334-10	◆◆◆◆	Gamma Glutamyl-Transferase (GGT)	1 x 100 mL (R1) 1 x 20 mL (R2)
235-60	◆◆◆◆	Glucose-SL	2 x 100 mL
80-6449-00	◆◆	Ultra N-geneous® HDL Cholesterol Calibrator	6 x 1 mL
6272-3	◆◆	HDL Ultra Calibrator	3 x 1 mL
6121	◆◆	HDL Ultra Test Kit	1 x 60 mL (R1) 1 x 20 mL (R2)

Please note that all products may not be available in all markets.

SEKURE® CLINICAL CHEMISTRY REAGENTS

PART NO.	AVAILABILITY	PRODUCT	CONFIGURATION
6122	◆ ◆	HDL Ultra Test Kit	1 x 250 mL (R1) 1 x 80 mL (R2)
80-6283-00	◆ ◆	Ultra N-geneous® HDL Cholesterol Reagent 1	1 x 750 mL
80-6277-00	◆ ◆	Ultra N-geneous® HDL Cholesterol Reagent 2	1 x 250 mL
157-30	◆ ◆ ◆ ◆	Iron-SL	3 x 100 mL (R1) 1 x 75 mL (R2) 1 x 10 mL Manual Calibrator
327-30	◆ ◆ ◆ ◆	Lactate Dehydrogenase (LDH)-SL	3 x 100 mL (R1) 1 x 75 mL (R2)
905-B	◆	Lipase Color Kit	5 x 30 mL Reagent 1 x 200 mL Solvent 1 x 60 mL Activator 2 x 3 mL Calibrator
80-4598-00	◆ ◆	LDL, N-geneous® Cholesterol Reagent 1	1 x 250 mL
80-4601-00	◆ ◆	LDL, N-geneous® Cholesterol Reagent 2	1 x 80 mL
80-4610-02	◆ ◆	N-geneous® LDL Cholesterol Calibrator	3 x 1 mL
7120	◆	LDL, Direct Liquid Select Cholesterol Reagent	1 x 30 mL (R1) 1 x 10 mL (R2)
175-12	◆ ◆ ◆ ◆	Magnesium	4 x 125 mL
252-20	◆ ◆ ◆ ◆*	Microalbumin	4 x 20 mL (R1) 2 x 10 mL (R2)
SE-252	◆ ◆ ◆ ◆	Microalbumin Multicalibrator	6 x 1 mL
117-30	◆ ◆ ◆ ◆	Phosphorus	3 x 100 mL (R1) 1 x 75 mL (R2) 1 x 15 mL Manual Calibrator
486616	◆ ◆	RPR	1 x 60 mL (R1) 1 x 20 mL (R2)
486623	◆ ◆	RPR Calibrator Set	5 Levels x 1 mL
486630	◆ ◆	RPR Control Set	2 x 1 mL (Positive) 2 x 1 mL (Negative)
511-40	◆ ◆ ◆ ◆	Salicylate-SL	4 x 10 mL Enzyme Reagent 4 x 10 mL NADH Reagent 1 x 5 mL Calibrator
740-10	◆ ◆ ◆ ◆	Sorbitol Dehydrogenase (SDH) For veterinary use only	10 x 1.18 mg (R1) 125 mL (R1α) 1 x 20 mL (R2)
740-25	◆ ◆ ◆ ◆	Sorbitol Dehydrogenase (SDH) For veterinary use only	20 x 0.2 mg (R1) 50 mL (R1α) 10 mL (R2)
SM-740	◆ ◆ ◆ ◆	Sorbitol Dehydrogenase (SDH) Control Material Level 1	6 x 2 mL
SM-741	◆ ◆ ◆ ◆	Sorbitol Dehydrogenase (SDH) Control Material Level 2	6 x 2 mL
200-55	◆ ◆ ◆ ◆	Total Protein	4 x 125 mL
450-50	◆ ◆ ◆ ◆	Total Protein (Micro)	2 x 250 mL 1 x 15 mL Calibrator
486647	◆ ◆	TPLA	1 x 45 mL (R1) 1 x 10 mL (R2)
515132	◆ ◆	TPLA Calibrator Set	5 Levels x 2 mL
515149	◆ ◆	TPLA Control Set	1 x 3 mL (A) 1 x 3 mL (B)
236-60	◆ ◆ ◆ ◆	Triglyceride-SL	2 x 100 mL

Please note that all products may not be available in all markets.

SEKURE® CLINICAL CHEMISTRY REAGENTS

PART NO.	AVAILABILITY	PRODUCT	CONFIGURATION
153-10	◆◆◆◆	Unsaturated Iron Binding Capacity (UIBC)	1 x 100 mL (R1) 1 x 25 mL (R2)
153-30	◆◆◆◆	Unsaturated Iron Binding Capacity (UIBC)	3 x 100 mL (R1) 1 x 75 mL (R2)
153-50	◆◆◆◆	Unsaturated Iron Binding Capacity (UIBC)	1 x 500 mL (R1) 1 x 300 mL (R2)
153-90	◆◆◆◆	Unsaturated Iron Binding Capacity (UIBC)	1 x 1000 mL (R1) 1 x 240 mL (R2)
SE-090	◆◆◆◆	DC-UIBC-Calibrator	6 x 10 mL
SE-091	◆◆◆◆	DC-UIBC-Lineates	3 Levels (2 x 5 mL)
283-30	◆◆◆◆	Urea L3K®	6 x 30 mL
237-60	◆◆◆◆	Uric Acid-SL	2 x 100 mL

Please note that all products may not be available in all markets.

Availability

- ◆ = EUROPE
- ◆ = MIDDLE EAST, AFRICA
- ◆ = ASIA
- ◆* = ASIA not including Japan
- ◆ = UNITED STATES



Because every result matters™

Sekisui Diagnostics, LLC
Lexington, MA, USA
+ 1-781-652-7800
Email: questions@sekisui-dx.com

Sekisui Diagnostics (UK) Limited
Allington, Maidstone, Kent, UK
+44-1622-607800
Email: info@sekisui-dx.com

www.sekisuidiagnostics.com